

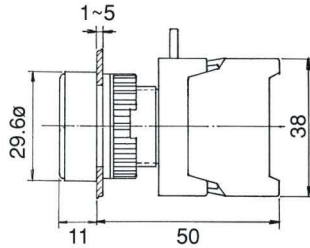
PUSH BUTTON SWITCHES, IP65



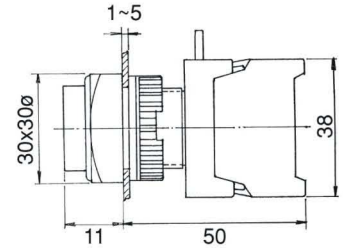
XB —
 22 —
 1 —
 O/C —
 R

Type	Mounting hole	No. of contact	Type of contact	Lens colour
XB, GBF, PBF: Flat head	22 : 22 ϕ	1	O: N/O(a)	● R: Red
XBL, GBL, PBL: Long head	30 : 30 ϕ	2	C: N/C(b)	● G: Green
XBS: Square head		3	O/C: N/O+N/C	● Y: Yellow
XLS: Square long head		4	1a+1b	● BL: Blue
XBG: Guard ring				● BK: Black
XGS: Guard ring square				○ W: White
XE, EB, GEB, XES: Mushroom head 40 ϕ				
BXE, BEB: Mushroom head 60 ϕ				
LEB, GLEB: Latching head				
PF, EPF, GPF, GEPF: Push on-Push off				

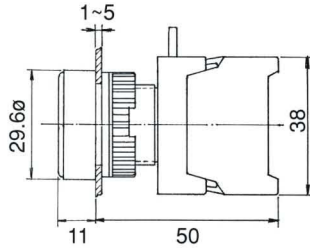
XB22-1/O



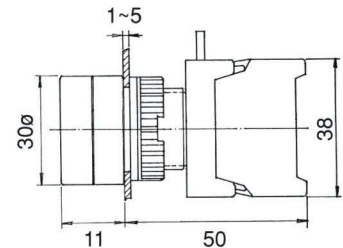
XLS22-1/O XLS22-10/C
XLS22-1/C



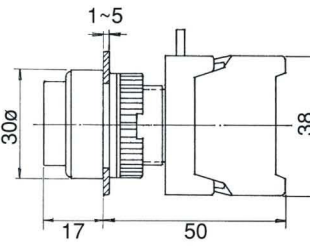
XB22-10/C



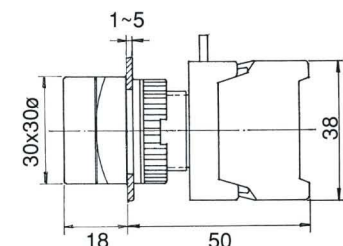
XBG22-1/O XBG22-10/C
XBG22-1/C



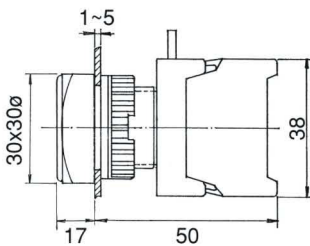
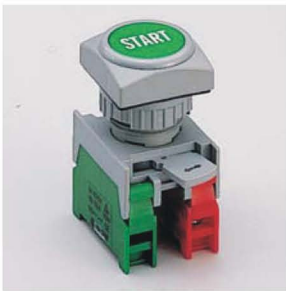
XBL22-1/O XBL22-10/C
XBL22-1/C



XGS22-1/O XGS22-10/C
XGS22-1/C



XBS22-1/O XBS22-10/C
XBS22-1/C



XE22-1/O XE22-10/C
XE22-1/C

